



POLYROC

— Prisma Tech Pvt Ltd —

Pioneer in Solid Surface Sheets manufacturing in Pakistan
NSF 51 - USA Certified





TABLE OF

CONTENTS

The concept of continuously innovating represents the very foundation of Prisma Tech, and through these efforts, we are working to build up on a track record of operational excellence and contribute widely to your dreams.



About Company 01

Prisma Tech Private Limited (PTPL) was incorporated in Pakistan in 2017 and is highly honored to be serving as the first and the only manufacturer of Solid Surface Material in Pakistan till date with an annual capacity of 75,000 Sheets

02

Certification

POLYROC solid surfaces are certified by NSF International as Food Safe product to be used in Kitchens, Restaurants, Food Courts, Hotels and Laboratories.etc...

Prisma Tech Private Limited is the only NSF-51 certified Solid Surface Sheets manufacturer in Pakistan.



Kitchen

Countertops 03

Bathroom Vanities 04

Reception Desks 05

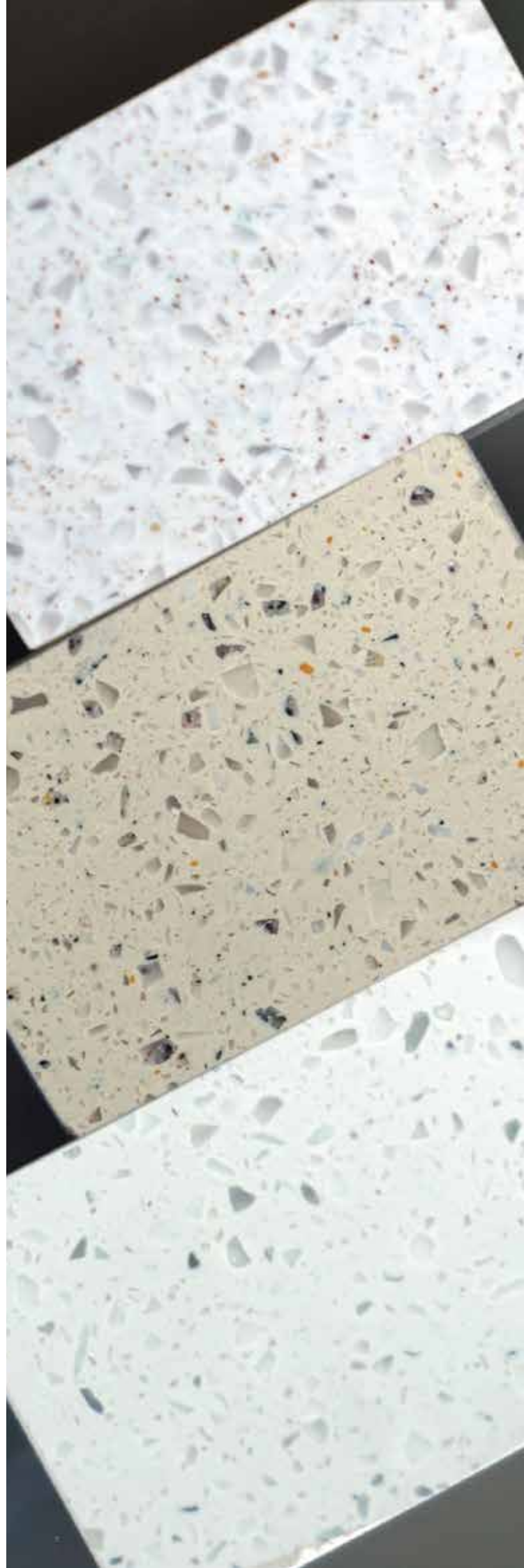
Labs & Hospitals 06

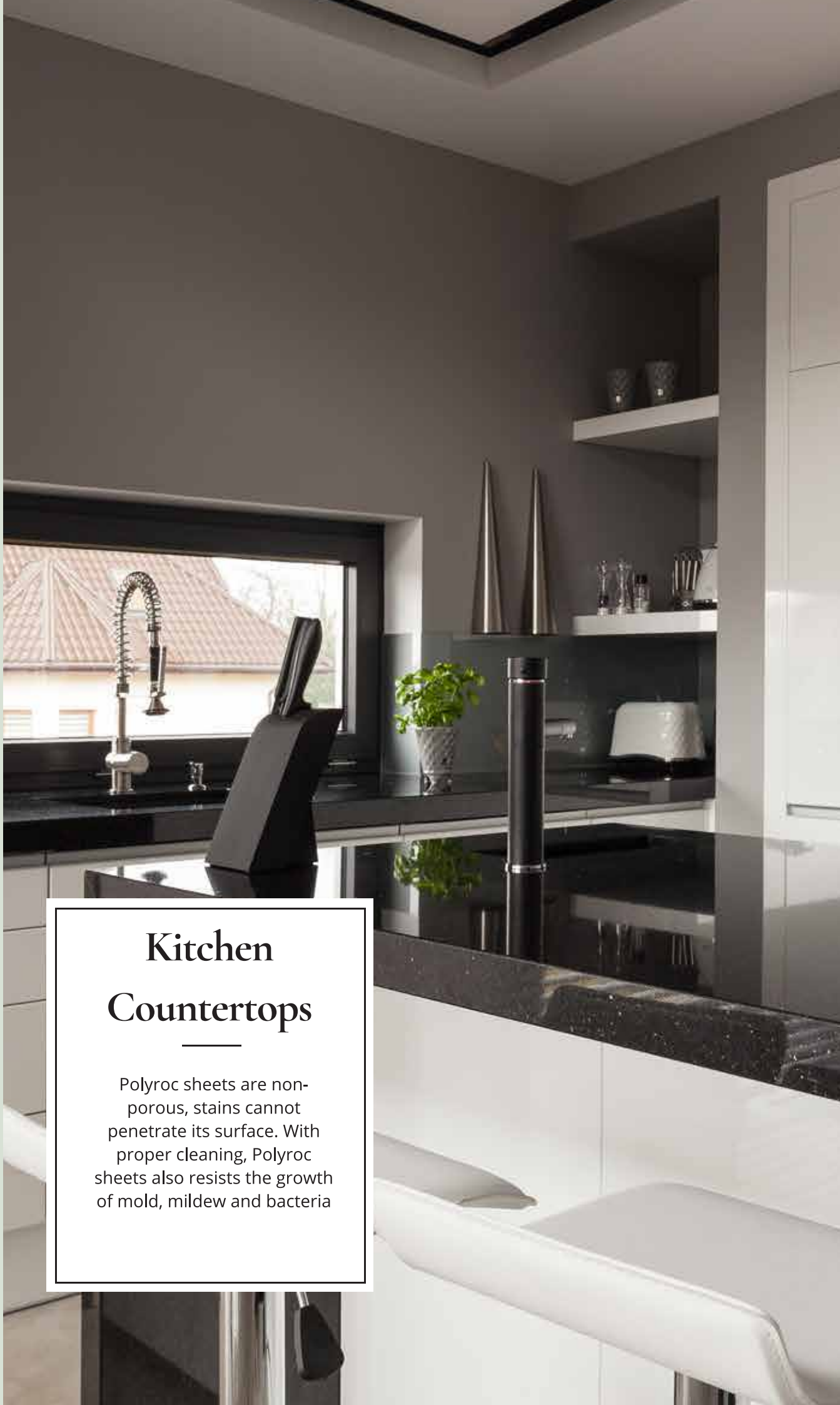
Scan to download our catalogue



Custom Colors 07

Our R&D is constantly innovating new design and colors to suit your needs





Kitchen Countertops

Polyroc sheets are non-porous, stains cannot penetrate its surface. With proper cleaning, Polyroc sheets also resists the growth of mold, mildew and bacteria

VANITIES



If You Can Imagine It,
You Can Create It



*Bathroom
Vanities*

As with any interior scheme, your designs for the bathroom represent an opportunity to realize your dreams and unique style. Polyroc sheets offers the inspirational variety, longevity, and elegance to embody your design ideas.

Whatever your vision for a bathroom project, basins, integrated vanities and other features made with Polyroc sheets are easy to include in your plans — the versatility they offer means custom solutions can be created in any size, shape, style or color. All Polyroc bathroom basins and vanities are simple to clean and can last as long as the life of the bathroom and beyond. Furthermore, the nonporous solid surface means that with proper cleaning, Polyroc sheets will not harbor the growth of mold or mildew.



OFFICE FURNITURE / RECEPTION DESKS



Reception Desks

The virtually seamless design possibilities of counters made with Polyroc sheets are bold, flexible, and dynamic. The color and texture options are endless. The surfaces stand up to the rigors of heavy use, while remaining stain-free and as good as new.

With Polyroc sheets, there's no limit on your design possibilities. Choose from an array of color, style, and display options, or create a customised solution for your unique design. Polyroc solid surface is versatile enough to meet all your needs.

Conference Table





Labs and Hospitals

Polyroc meets the high expectations of the most demanding healthcare design environments. With unlimited potential for surfaces in public spaces, operating room walls, scrub rooms, showers and baseboards, Polyroc is:

- Easy-to-clean and maintain.
- When properly cleaned, Polyroc is a hygienic surface and does not support the growth of mold and mildew.
- A nonporous surface with a smooth, seamless appearance.
- Extremely durable and long-lasting, standing up to hard knocks in high-traffic environments that can easily damage other surfaces, such as drywall and laminate.
- Easily renewed and repaired.
- Stain resistant
- Slip resistant
- Extensive color choice available, others on demand



Custom Colors and Designs

We believe your creativity should never be limited for want of that perfect shade. Give us a color sample, a fabric strip, a paint chip, a logo or a color code – whatever you are trying to match – and we'll make a sample color plaque for your evaluation. Once you approve the lab sample and place your order, lead times range from eight to twelve weeks, depending upon the volume and complexity of the order, and the level of demand.





SHADES & DESIGN

Solid Colors



Ultra White



Mango



Naranja



Jet Black



Jasmine Green



Pearl Grey



Rojo



Concrete
Grey



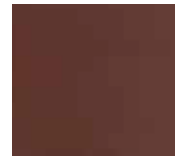
Forest Green



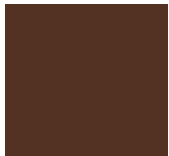
Pearl



Caramel



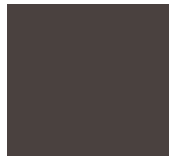
Walnut



Chocolate



Indigo

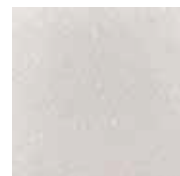


Cafe

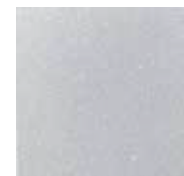
Crystal Series



Crystal White



Ivory Crystal



Silver
Metalized



Crystal Black

SHADES & DESIGN

Econo Range



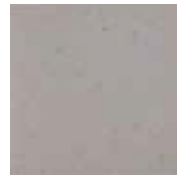
Pearly White



Grace



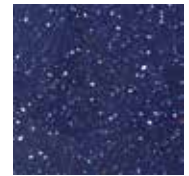
Smoke



Oak



Star Night



Sapphire



Cosmos



Umber



Midnight



Universe



Crystal



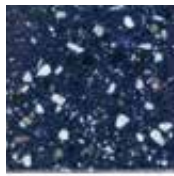
Aqua



Aurora



Aquamarine



Blue Chip



Beach



Cocoa Brown



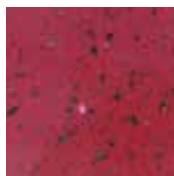
Dusk



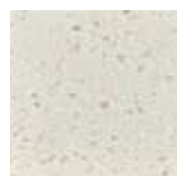
Sandy



Mercury



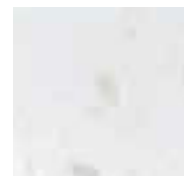
Ruby



Sandstone



Snow White



Moon Stone



Grassy



Lime

SHADES & DESIGN

Premium Series



Sahara



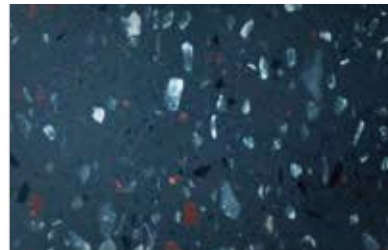
Seashore



Bianco



Fossil



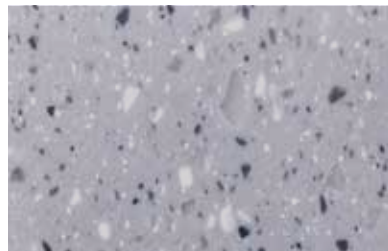
Bonfire



Black Sea



Ash Grey



Pebble Stone



Athena



Gobi Desert



PRODUCT DATA SHEET

PROPERTIES	TEST STANDARD	UNITS	RESULTS
Raw density	ASTM D792-13(Method A)	kg/m ³	1700-1925
Weight per square meter		kg/m ²	20-22.7
Flexural modulus of elasticity	ASTM D790-15e2	Gpa	6.75-8.25
Flexural strength	ASTM D790-15e2	Mpa	54-68
Tensile modulus of elasticity	ASTM D638-14	Gpa	9.27-10.34
Tensile Strength	ASTM D638-14	Mpa	28.5-35
Barcol hardness	JC/T 908/2013		59.4-61
Ball drop test (Drop weight impact)	JC/T 908/2013/ASTM D-7136	N	6820-6840
Water absorption (24hr Immersion)	ASTM D570-98 (2010)e1	%	0.016-0.05
IZOD impact strength	ASTM D256-10e1 (Method A)	KJ/m ²	2.6-3.2
Thermal Expansion	ASTM D-696	m/m/°C	4×10 ⁻⁵ - 5.5×10 ⁻⁵

PRODUCT SELECTION GUIDE

	6MM	10MM	12MM	18MM
Furniture	●	●	●	●
Interior Walls	●			
Furnishing/Furniture Paneling	●	●		
Worktop (Light Duty/Easy thermoforming process)	●			
Worktops			●	●
Countertop	●	●	●	●
Wall cladding	●	●		

Special customized size is available: Thickness: 6-24 mm

Recommendation

Heat :

Always use Heat protection pads, trivet or protective sink mat for hot cookware, or leave cookware to cool on the hob first. Never place hot pans, particularly cast iron pans, directly onto a solid surface material countertop or in a sink. Pouring boiling liquids into sinks without turning on the cold tap may damage your surface.

Excessive heat can damage any surface

Scratches

Never cut or chop directly on Solid Surface Sheets, use a cutting board instead. Like all materials, Solid Surface takes slight abrasion marks as a result of normal daily use.

Chemical Spills

Accidental spills of strong chemicals (paint stripper, brush cleaner, metal cleaners, oven cleaners, cleaners containing methylene chloride, acid drain cleaners, acetone based nail polish removers, etc) should be flushed promptly with plenty of soapy water to avoid damaging worktops.

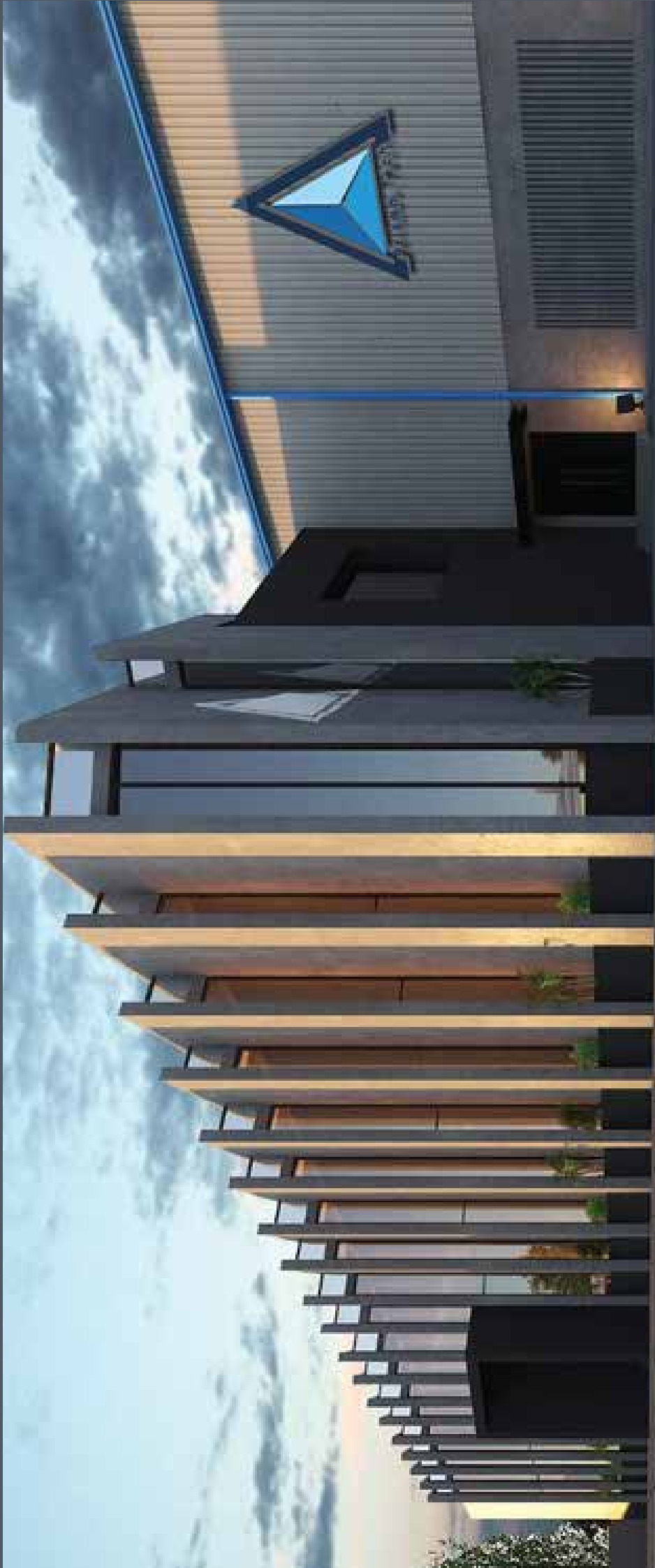
For nail varnish spills, non-acetone based remover can be used and then flushed with water.

Undetected or prolonged exposure to chemicals may damage the surface.

*All the aforementioned issues are repairable, leaving absolutely no marks behind if proper care and repairing is done by professionals.

Prisma Tech Pvt Ltd

POLYROOC



Head Office

93 CCA, 2nd Floor, Block DD, Phase 4,
DHA - Lahore.

0344 445 7821 / 042 37196993

Factory

Plot No. B-51, Phase 1-B, M31C, FIEDMC,
Near Sahianwala Interchange Faisalabad



PrismaTechPrivateLtd



PrismaTechPvtLimited



www.prismatech.com.pk